

LOMANCO® The ORIGINAL 750

SLANT BACK VENT

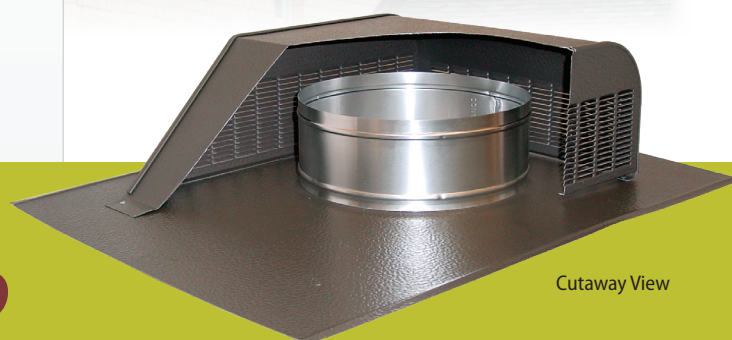


THE ORIGINAL

- ▶ The Original Slant Back Design
- ▶ The Original Weather Proof Design
- ▶ The Original Bird Proof Design
- ▶ The Original Upward Discharging Louver Design

FIELD TESTED & PROVEN

- ▶ Field Tested & Proven for Over 60 Years
- ▶ Field Tested & Proven to Prevent Roof Discoloration
- ▶ Field Tested & Proven Stack Effect for Enhanced Airflow
- ▶ Field Tested & Proven Customer Satisfaction

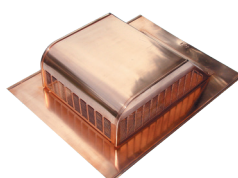


Cutaway View

**OFTEN IMITATED
NEVER DUPLICATED**

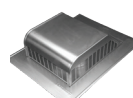
North American Contractors' "Roof Vent of Choice" for over 60 years!

Model	Overall Size (in.)	Opening Size (in.)	NFA (in. ²)
750*	16 x 20 ⁵ / ₁₆ x 5	8	50
750-G* Galvanized Steel	16 x 20 ⁵ / ₁₆ x 5	8	50
750-E	23 x 27 ¹ / ₄ x 5	8	50
750-S *†	16 x 20 ⁵ / ₁₆ x 5	8	50
750-GS*† Galvanized Steel	16 x 20 ⁵ / ₁₆ x 5	8	50
750-ES †	23 x 27 ¹ / ₄ x 5	8	50

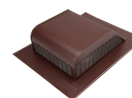


Specialty Item: 750 is also available in Copper.

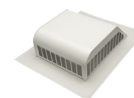
Colors Available:



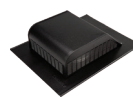
Mill Finish



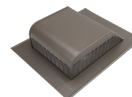
Brown



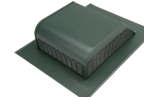
White



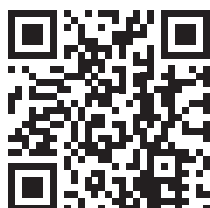
Black



Weathered Bronze



Forest Green
(available in aluminum only)



**Want more info?
Scan this QR
code with your
smartphone.**



**Wildland
URBAN Interface**

(WUI) Products
Meets the prescriptive language of the ICC
and California codes as well as the NFPA
1144 standard for WUI



CSA Approved
(750, 750-S)



**Texas Department of
Insurance "Windstorm"
Approved**

MADE IN USA

LO405_0318

Lomanco, Inc. • lomanco.com • 1.800.643.5596



lomanco



lomancovents

LOMANCO® VENTS 700 SERIES

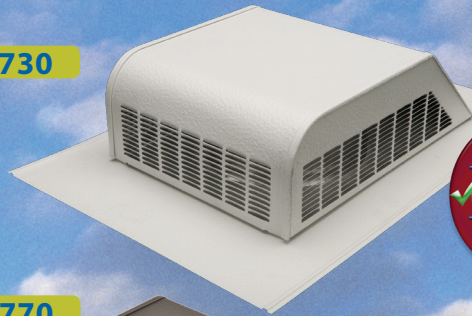
Lomanco 700 Series Roof Louvers are built with three outward and upward discharging side vents to prevent unsightly roof streaking that is so common with ordinary roof louvers. This exclusive Lomanco design also prevents the problem of bird and animal infiltration while providing maximum attic exhaust air flow and weather protection.

FEATURES

- ▶ Designed to prevent roof discoloration.
- ▶ Three sides louvered for greater air flow.
- ▶ Embossed aluminum finishes for added strength, extended paint life, and blending appearance with shingles.
- ▶ **750 is the ORIGINAL slant back vent. See reverse for additional 750 Series specs and options.**
- ▶ 700 has neoprene damper for use as kitchen/bathroom exhaust vent.
- ▶ 730 is a smaller version of a 750 and included in the EVA Combo vent package.
- ▶ 750-E is a 750 with an extended flange size.
- ▶ 750-G; heavy duty galvanized steel construction.
- ▶ 750-S†, 750-GS† & 750-ES†; metal screen insert for enhanced weather protection.
- ▶ 770 is a larger version of a 750.
- ▶ 770-D is a twin 770; off-ridge vent.

Roof Vents

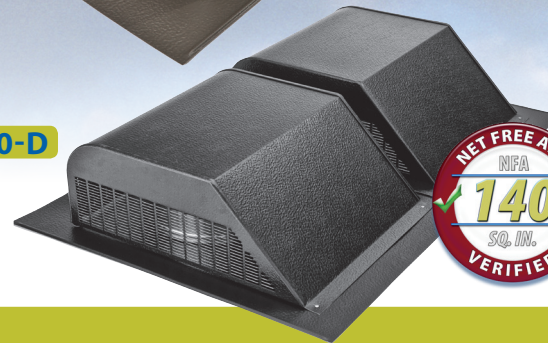
730



770

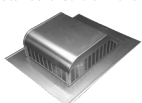


770-D

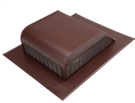


**PREVENTS UNSIGHTLY
ROOF DISCOLORATION!**

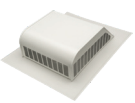
Standard Colors Available:



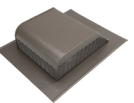
Mill Finish



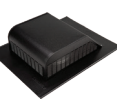
Brown



White



Weathered Bronze



Black

†**Wildland**
URBAN Interface

(WUI) Products
Meets the prescriptive language of the ICC
and California codes as well as the NFPA
1144 standard for WUI

MIAMI-DADE COUNTY
APPROVED

(730, 750, 750-S, 750-E,
770, 770-D)



CSA Approved
(750, 750-S, 770)



* Texas Department of
Insurance "Windstorm"
Approved

Model	Overall Size (in.)	Opening Size (in.)	NFA (in. ²)
730*	12 ³ / ₁₆ x 17 ³ / ₄ x 4	6 1/4	30
750*	16 x 20 ⁵ / ₁₆ x 5	8	50
770*	16 ⁵ / ₈ x 22 ³ / ₈ x 6	9 1/2	70
770-D*	32 ¹ / ₂ x 22 ³ / ₈ x 6	Two 9 1/2	140
700	16 x 20 ⁵ / ₁₆ x 5	8	—

		Attic floor space to be ventilated in square feet:																							
Exhaust System		1000						1500						2000						2500					
		Exhaust	C416	C616	C816	105/190	140	Exhaust	C416	C616	C816	105/190	140	Exhaust	C416	C616	C816	105/190	140	Exhaust	C416	C616	C816	105/190	140
730	Intake	8	10	7	4	4	3	12	15	10	6	5	5	16	20	13	8	7	6	20	24	17	10	9	7
	DA-4 / IV-9	12	15	10	6	5	5	6	10	10	6	5	5	14	17	10	9	7	10	17	24	29	20	12	10
750	Intake	5	10	7	4	4	3	8	16	11	7	6	5	10	20	14	8	7	6	12	24	17	10	9	7
	DA-4 / IV-9	8	16	11	7	6	5	7	12	10	20	14	8	7	6	8	14	12	24	17	10	9	7	10	17
770	Intake	4	12	8	5	4	4	6	17	12	7	6	5	7	20	14	8	7	6	9	26	18	10	9	8
	DA-4 / IV-9	6	17	12	7	6	5	7	12	7	20	14	8	7	6	8	14	11	31	21	12	11	9	13	22
770-D	Intake	2	12	8	5	4	4	5	17	12	7	6	5	7	23	16	9	8	7	5	28	19	11	10	8
	DA-4 / IV-9	3	17	12	7	6	5	7	12	4	23	16	9	8	7	9	16	6	34	23	13	12	10	14	24

LO405_0318

